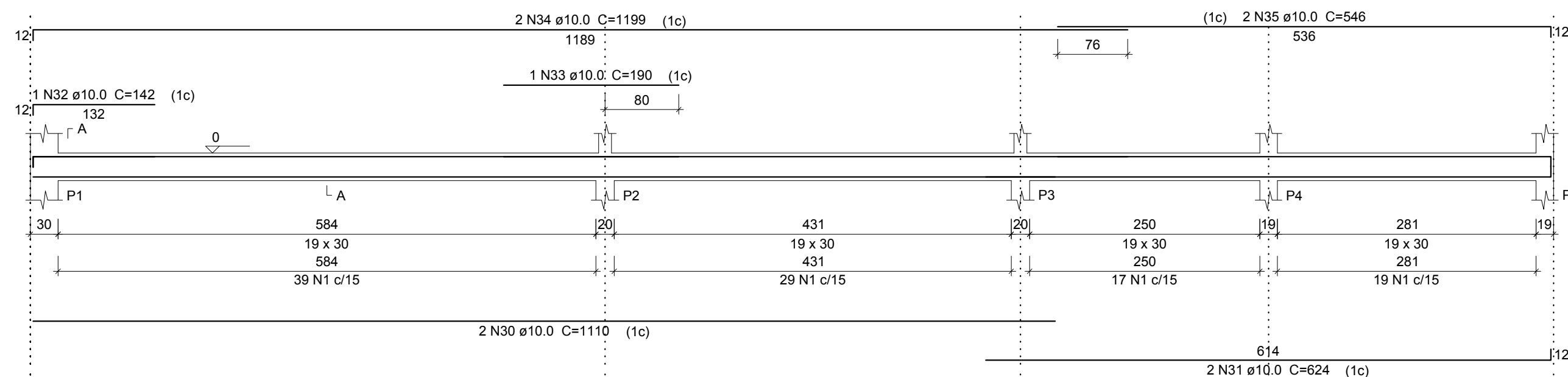


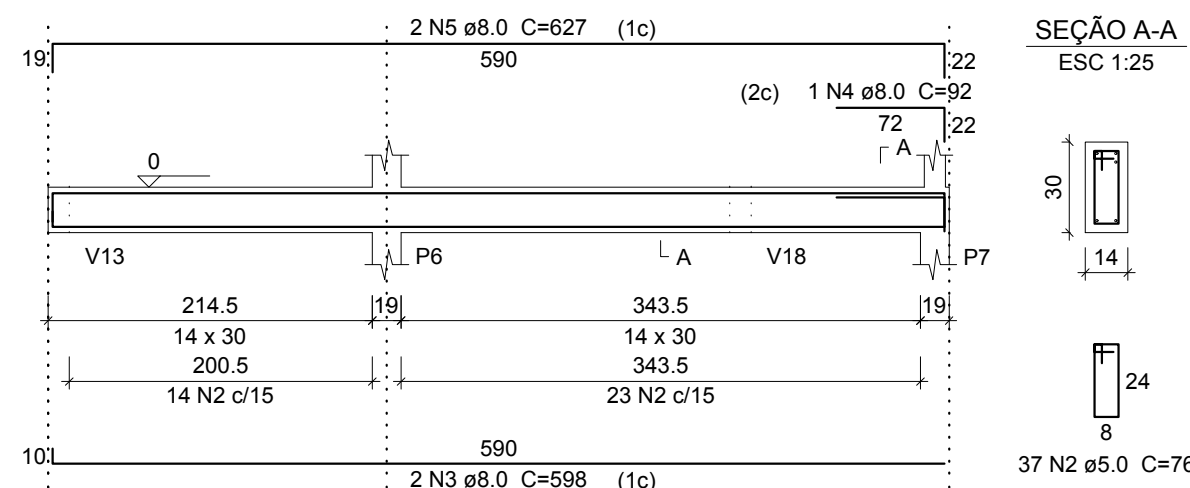
V1

ESC 1:50



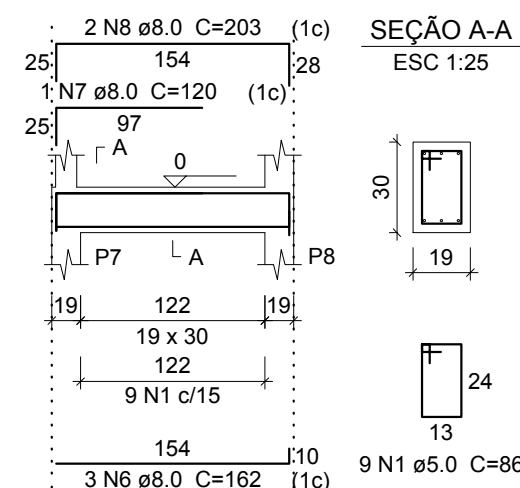
V2

ESC 1:50



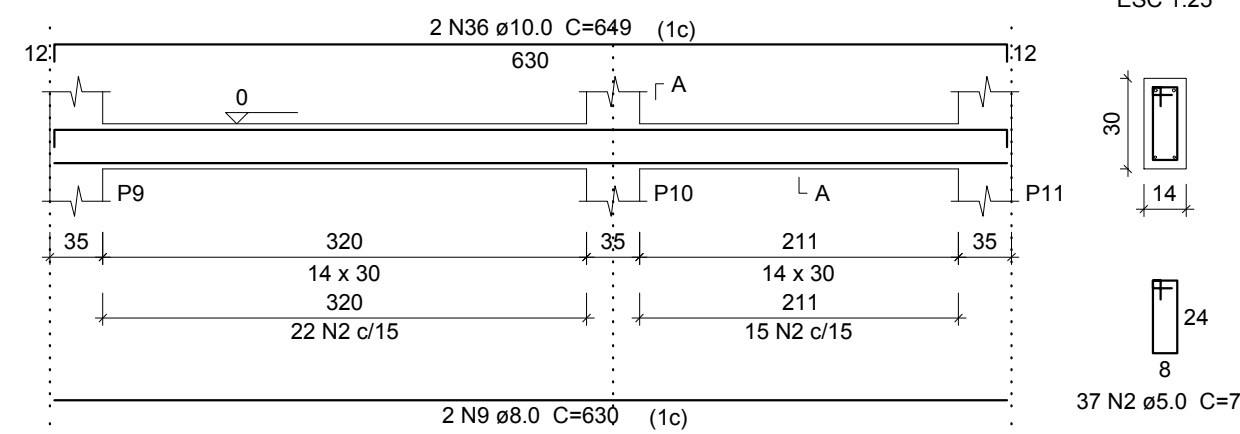
V3

ESC 1:50



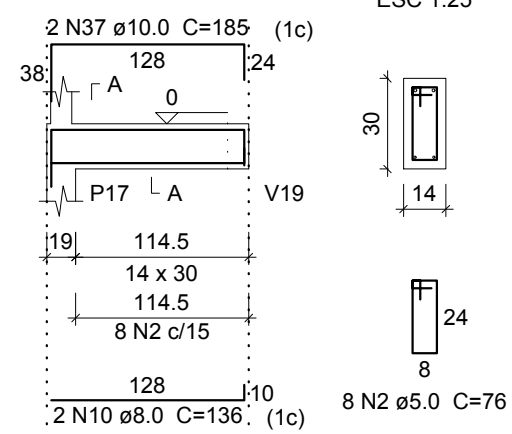
V4

ESC 1:50



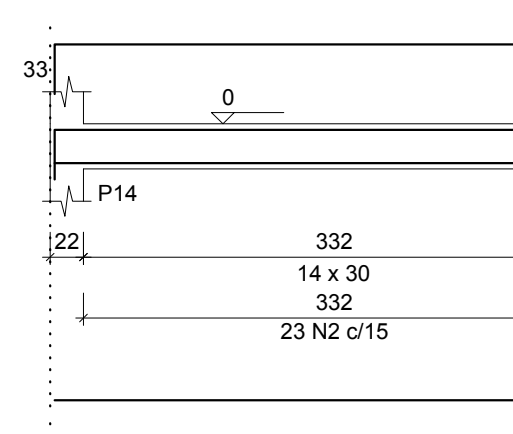
V5

ESC 1:50



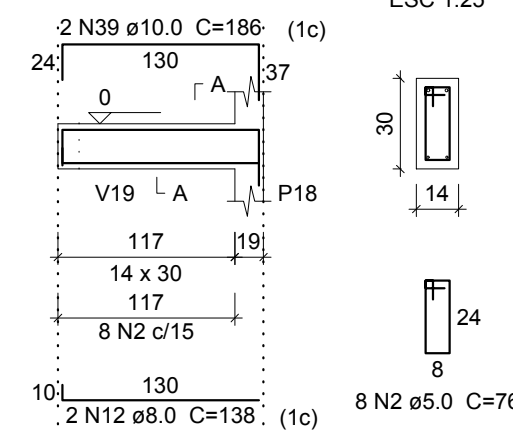
V6

ESC 1:50



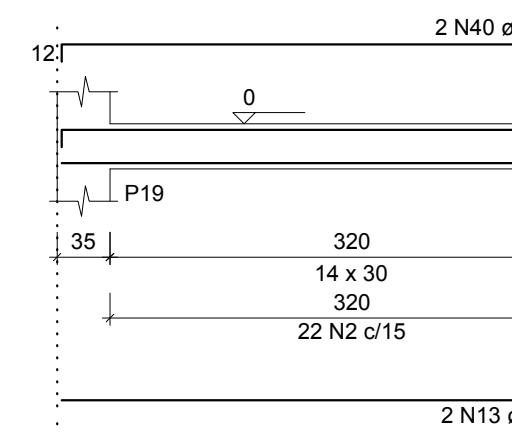
V7

ESC 1:50



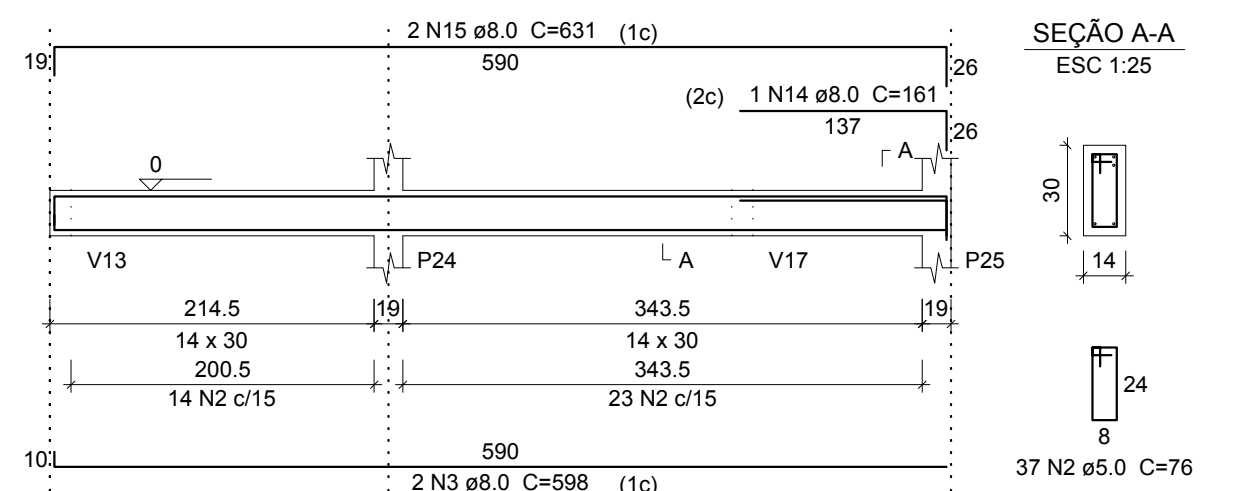
V8

ESC 1:50



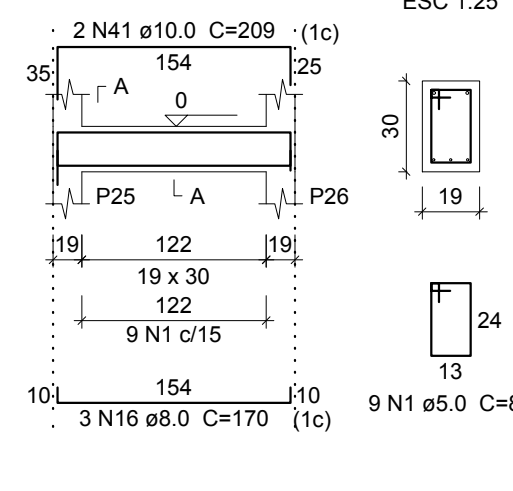
V9

ESC 1:50



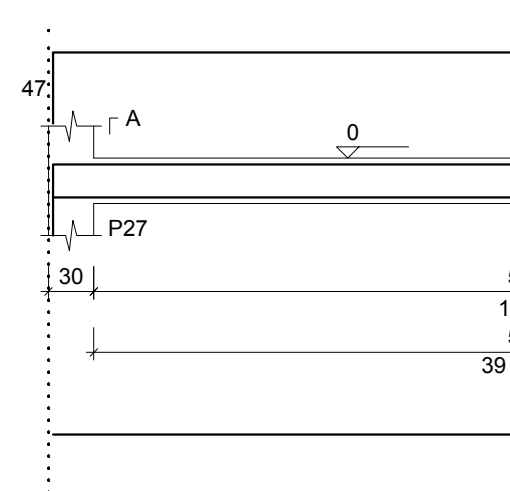
V10

ESC 1:50



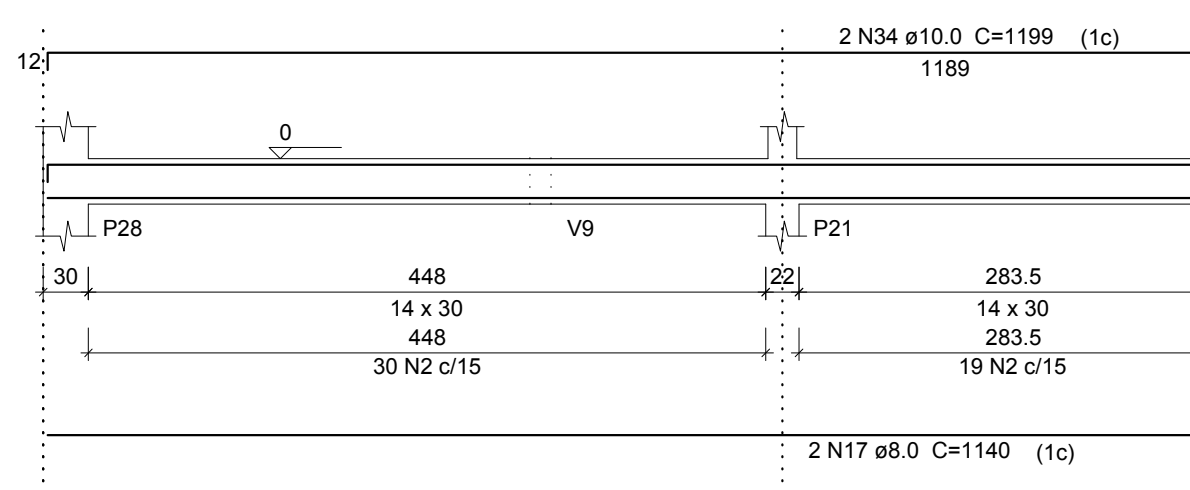
V11

ESC 1:50



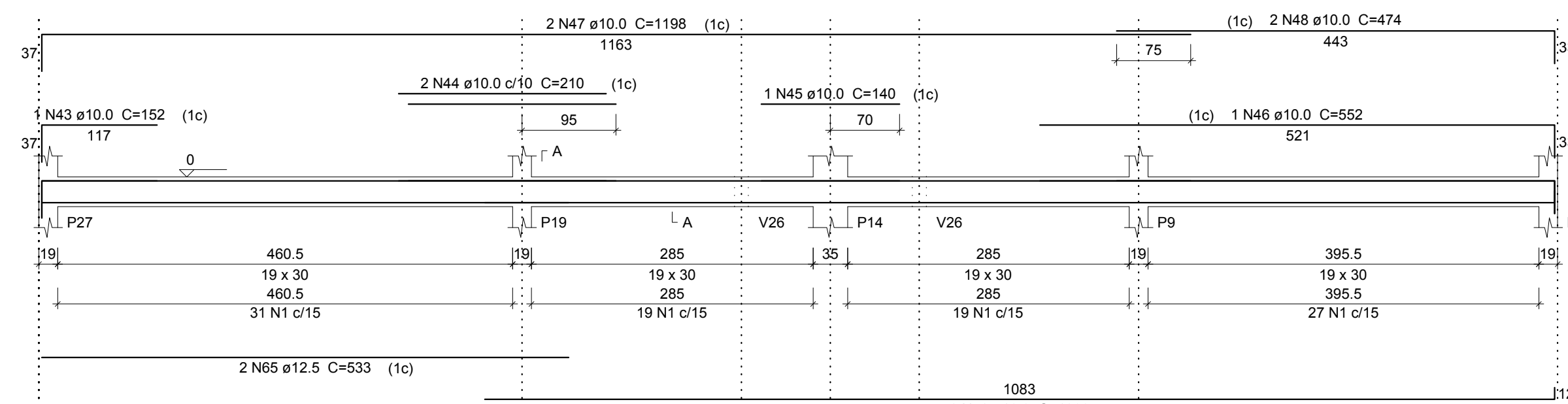
V13

ESC 1:50



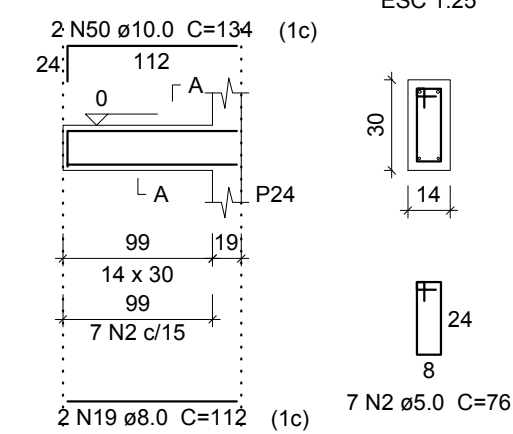
V12

ESC 1:50



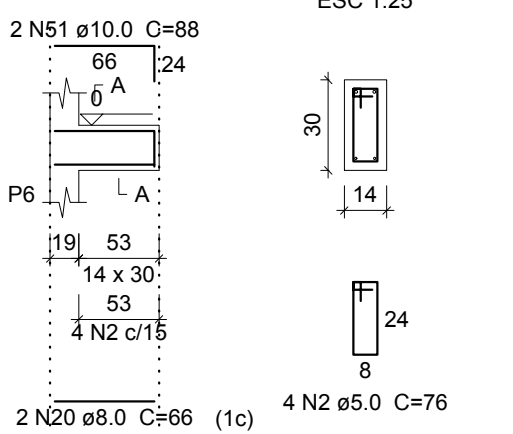
V14

ESC 1:50



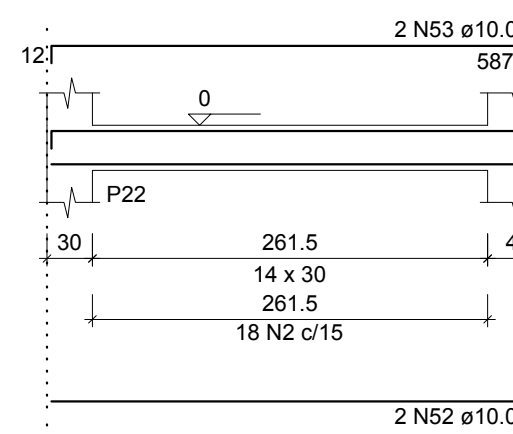
V15

ESC 1:50



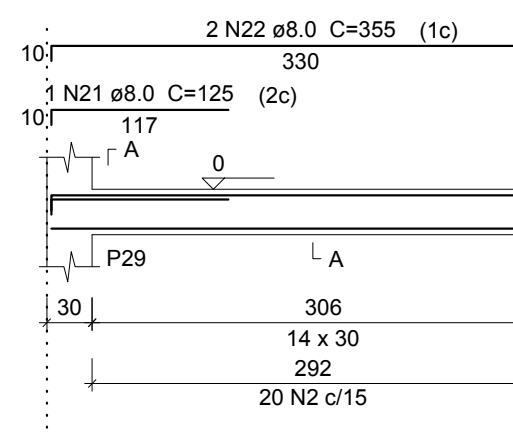
V16

ESC 1:50



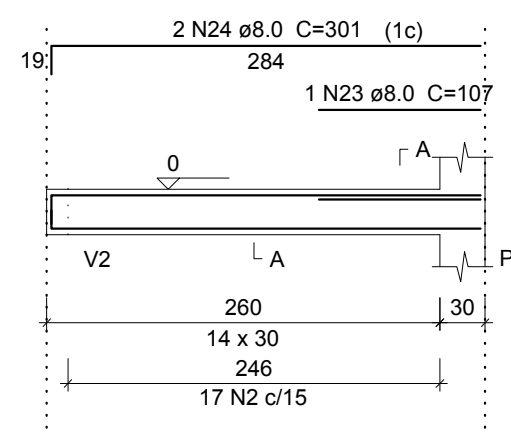
V17

ESC 1:50



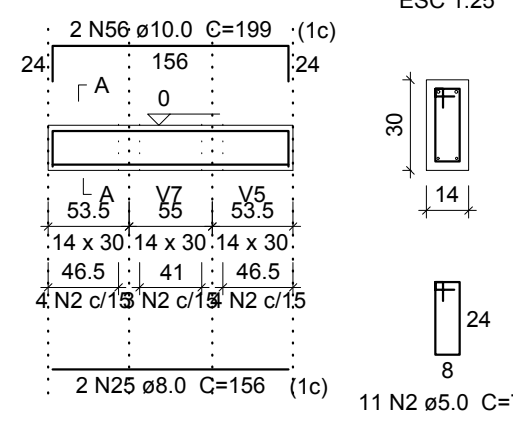
V18

ESC 1:50



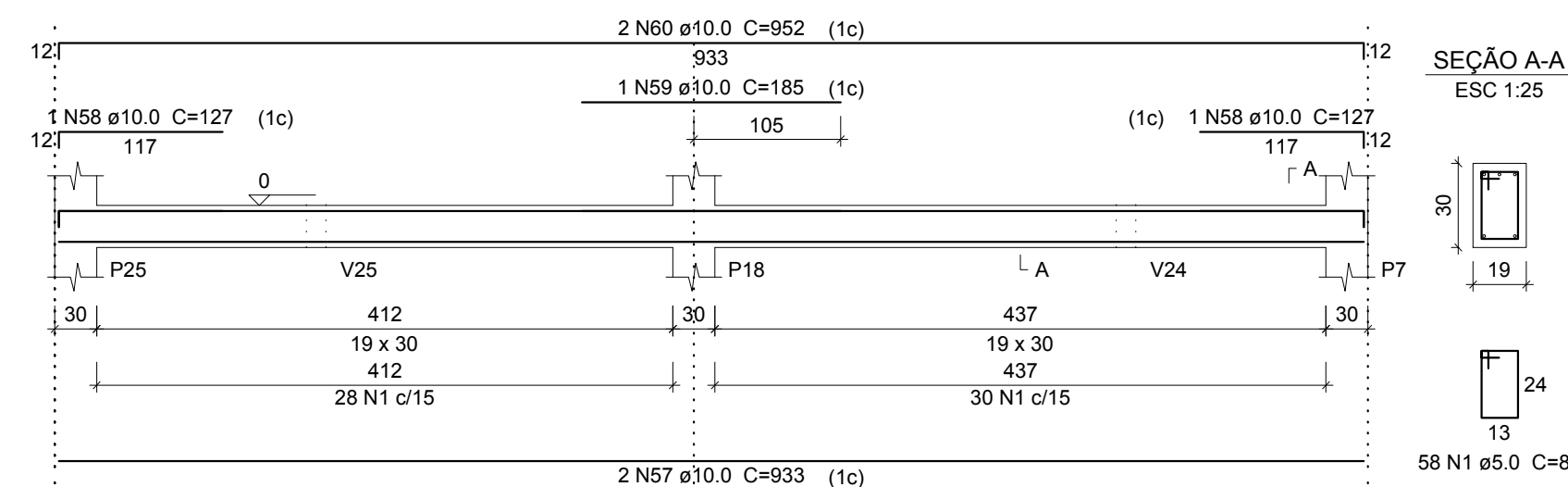
V19

ESC 1:50



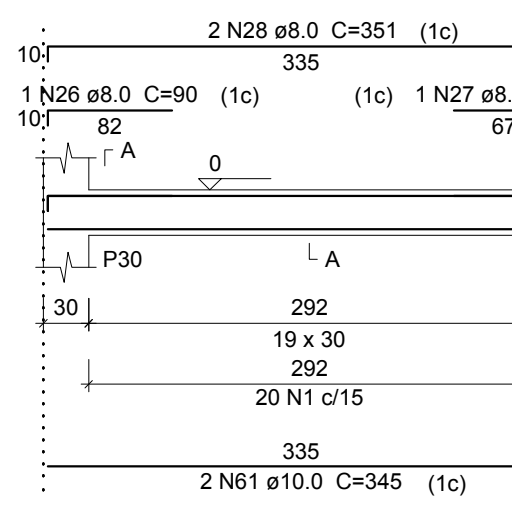
V20

ESC 1:50



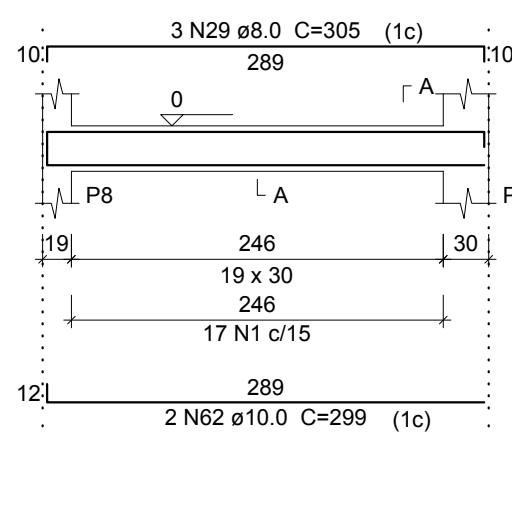
V21

ESC 1:50



V22

ESC 1:50



Relação do aço

AÇO	N	DIAM (mm)	QUANT	C-UNIT (cm)	C-TOTAL (cm)
CA60	1	5.0	417	86	35862
V4	2	5.0	412	76	31312
V7	3	8.0	4	598	2392
V10	4	8.0	1	92	92
V13	5	8.0	2	627	1254
V16	6	8.0	3	162	486
V19	7	8.0	1	120	120
V22	8	8.0	2	203	406
	9	8.0	2	630	1260
	10	8.0	2	136	272
	11	8.0	2	972	1944
	12	8.0	2	138	276
	13	8.0	2	628	1256
	14	8.0	1	161	161
	15	8.0	2	631	1262
	16	8.0	3	170	510
	17	8.0	2	1140	2280
	18	8.0	2	451	902
	19	8.0	1	112	224
	20	8.0	2	66	132
	21	8.0	1	125	125
	22	8.0	2	355	710
	23	8.0	1	107	107
	24	8.0	2	301	602
	25	8.0	2	156	312
	26	8.0	1	90	90
	27	8.0	1	75	75
	28	8.0	2	351	702
	29	8.0	3	305	915
	30	10.0	4	1110	4440
	31	10.0	4	624	2496
	32	10.0	1	142	142
	33	10.0	1	190	190
	34	10.0	4	1199	4796
	35	10.0	2	546	1092
	36	10.0	2	649	1298
	37	10.0	2	185	370
	38	10.0	2	1037	2074
	39	10.0	2	186	372
	40	10.0	2	647	1294
	41	10.0	2	209	418
	42	10.0	2	1093	2186
	43	10.0	1	152	152
	44	10.0	2	210	420
	45	10.0	1	140	140
	46	10.0	1	552	552
	47	10.0	2	1198	2396
	48	10.0	2	474	948
	49	10.0	2	429	858
	50	10.0	2	134	268
	51	10.0	2	88	176
	52	10.0	2	587	1174
	53	10.0	2	606	1212
	54	10.0	2	340	680
	55	10.0	2	294	588
	56	10.0	2	199	398
	57	10.0	2	933	1866
	58	10.0	2	127	254
	59	10.0	1	185	185
	60	10.0	2	952	1904
	61	10.0	2	345	690
	62	10.0	2	299	598
	63	12.5	2	1197	2394
	64	12.5	2	601	1202
	65	12.5	2	533	1066

Resumo do aço

AÇO	DIAM (mm)	C-TOTAL (m)	PESO + 10 % (kg)
CA50	8.0	188.7	81.9
	10.0	366.3	248.4
	12.5	46.7	48.4
CA60	5.0	671.8	113.9
PESO TOTAL (kg)			
CA50	379.7		
CA60	113.9		

Volume de concreto (C-25) = 6.7 m³
Área de forma = 103.69 m²

PRÓ-REITORIA DE ADMINISTRAÇÃO
COORDENAÇÃO DE ENGENHARIA E ARQUITETURA
Rua Esmeralda, 430 - Faixa Nova - Camobi - CEP 97110-767 - Santa Maria - Rio Grande do Sul.
Telefone: (51) 3228-6630

OBRA: SALAS DE AULA E SANITÁRIOS/VESTIÁRIOS

LOCAL: IF FARROUPILHA - CAMPUS SANTO ÂNGELO

PROJETO: ESTRUTURAL PRÉDIO SANITÁRIOS

ÁREA: 662,73 m²

CONTEÚDO: VIGAS DE FUNDAÇÃO 01

ESCALA: 1/50

PROPRIETÁRIO:

DATA: Março/2017

RESPONSÁVEL:

DESENHO: Cristina

PRANCHA:

DET EST 03/19